



Create your remote device dashboard.

viewON
for eWON



Web HMI
editor

www.ewon.biz



What is viewON ?

viewON is a graphical environment used to design animated HMI pages for the eWON Flexy. Embedded as a Web page, viewON transforms the eWON Flexy into a powerful remote dashboard containing complete synoptics with various objects and animations.

Key benefits:

INSTANT ACCESS TO DATA AND KPI

Web-HMI capabilities can radically change remote access operations by giving service organizations a real-time view of remote equipment and other assets.

HTML 5 AND CSS3 COMPLIANT

viewON is a Web-based HMI with pure web HTML5 & CSS3 support, which gives full compatibility with any mobile devices (tablet, smartphone). No installation is required, since it can be viewed from any web-browser.

IMPROVED REMOTE DIAGNOSTICS

viewON provides the graphical capabilities to implement a powerful remote dashboard for monitoring and diagnostic purposes: alarm history and acknowledgement, real time and historical trends.

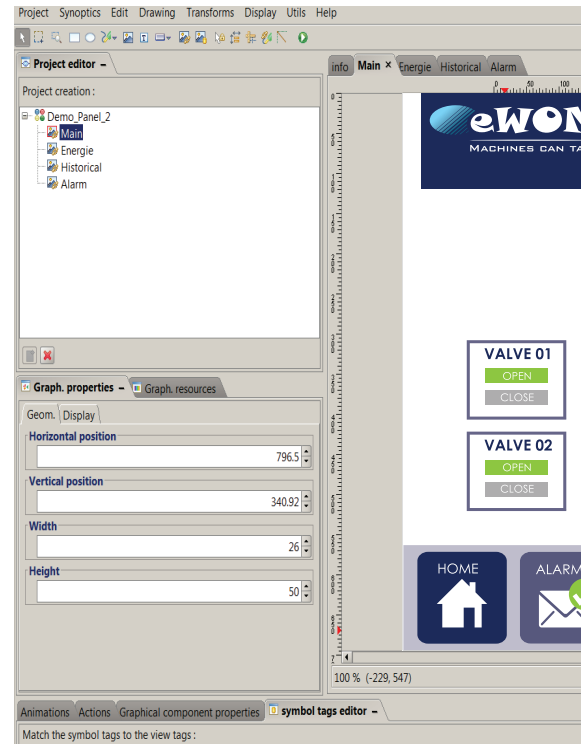
SIMPLE AND SECURE, NO PROGRAMMING

viewON enables machine builders and system integrators to create HMI web pages, within minutes, in just a few mouse clicks and with no specific web skills or knowledge required. Embedded into the eWON web server, viewON HMI can be viewed from anywhere by using our cloud-based remote connectivity solution Talk2M or eFive VPN appliance.

TYPICAL MARKETS AND APPLICATIONS



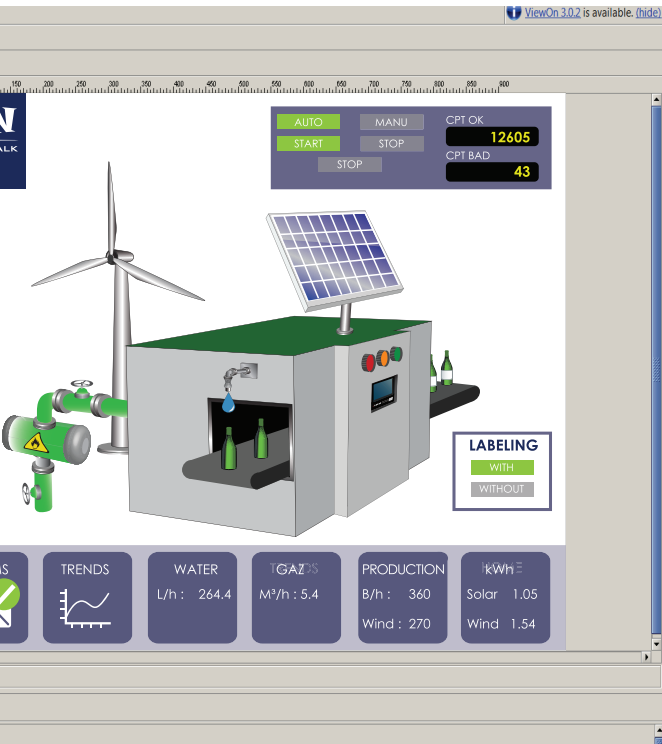
View and monitor real-time decision



M2Web



remote assets over the Internet for improved making with viewON



Remote access anywhere, anytime thanks to M2Web and Talk2M



Key features:

ALARMS

An alarm history and summary (real-time alarms) can be added as a graphical component of your synoptic view. The ability to acknowledge alarms promptly can significantly reduce costly downtime and enables faster responses in critical situations.

GRAPHICAL TRENDING

viewON allows you to switch seamlessly between real-time and historical data with a single mouse click. You can zoom in on any area of interest by dragging the cursor over the relevant part of the trend. Whether you want to look at a couple of seconds or several days of data in one view, viewON will give you the graphs you require.

SYMBOLS LIBRARY

Library symbols may be used out-of-the box or customized as required. Create and enhance your Symbols Library using the Synoptics menu.

SIMULATOR

Save time and money by using an integrated simulator to test your animations without uploading them to the eWON device. What you see is what you get!

I/O TAGS

Each graphical element and symbol can be linked to a specific tag (boolean or analogue) stored in the eWON device. Internal tags can be monitored. The tag list can be imported to your project with a single mouse click. You can use Basic scripting to customize applications and address specific system requirements.

SYNOPTICS

viewON provides an enhanced graphical editing environment with a comprehensive range of graphics primitives from which graphical symbols can be created. Each graphic element can be edited individually, providing transparency, fill style with linear or circular gradient effect, line style, orientation, etc. Each graphic element can also be animated individually. Powerful animations such as rotation, translation, bar graphs and colour on state provide context for data and better and more rapid understanding of the information displayed.

CLIENT SIDE SCRIPTING

Users are able to insert their own custom Javascript inside their viewON project

MOBILE VIEW

Depending on the platform used, the project can be visualized differently

USER ACCESS RIGHTS

Depending on the user browsing the project; views / elements can be displayed differently



View and monitor remote assets over the Internet for improved real-time decision making

Technical characteristics:

Web HMI	
Technology	Based on HTML 5 and CSS3, no installation required
eWON Web server	1 Mb to 3 Mb storage space for web pages (according to memory setup) Very small page footprint
eWON Firmware	Firmware 5.4 or higher Optimized for Firmware 8.0 or higher
Drawing tools	Button, Check box, Toggle button, Number editor, slider, Alarm summary, Alarm History, Menu Bar, Trends Rectangles and squares, ellipses and circles, bezier lines and curves Library symbols, fully vectorized, SVG format
Compatibilities	Compatible with all eWON Flexy and 4xxxCD models
	Compatible with Talk2M Free+ and Pro services, eCatcher and M2Web
	Compatible with all modern Internet browsers (JS, HTML5, SVG) on recent mobile platforms (Android , iOS, Windows Phone)
Web HMI Editor Software	
Operating system	Windows XP (SP3), 7 or 8
Languages	English, French
Communication with eWON	Import of eWON tag names database Automatic page compile and export
Debugger	Integrated debugger to test animations

Ordering Ref.:

VW30001	1 perpetual license, free updates
---------	-----------------------------------

About Talk2M:



Talk2M is the first secure industrial connectivity service in the cloud. With servers all over the world, Talk2M offers a highly reliable, efficient and secure solution for connecting to machines remotely. Talk2M gathers thousands of accounts and manages thousands of connections per day including full audit trail connection tracking.

www.ewon.biz/talk2m

About eWON Flexy:



The eWON Flexy is the first industrial modular M2M router and data gateway designed for OEMs and system integrators. The flexibility allows remote devices to be linked in an environment where communication technologies are constantly changing, and lets you communicate universally with the most varied field equipment, regardless of the protocol used.



www.ewon.biz/flexy

HMS - Sweden (HQ)

Tel : +46 35 17 29 00 (Halmstad HQ)
E-mail: sales@hms-networks.com

HMS - Belgium (eWON)

Tel: +32 67 895 800
E-mail: ewon@hms-networks.com

HMS - China

Tel : +86 010 8532 3183
E-mail: cn-sales@hms-networks.com

HMS - France

Tel: +33 368 368 034 (Mulhouse office)
E-mail: fr-sales@hms-networks.com

HMS - Germany

Tel: +49 721 989777-000
E-mail: ge-sales@hms-networks.com

HMS - India

Tel: +91 83800 66578
E-mail: in-sales@hms-networks.com

HMS - Italy

Tel : +39 039 59662 27
E-mail: it-sales@hms-networks.com

HMS - Japan

Tel: +81 45 478 5340
E-mail: jp-sales@hms-networks.com

HMS - Switzerland

Tel: +41 61 511342-0
E-mail: sales@hms-networks.ch

HMS - UK

Tel: +44 1926 405599
E-mail: uk-sales@hms-networks.com

HMS - United States

Tel: +1 312 829 0601
E-mail: us-sales@hms-networks.com

www.ewon.biz